



Sidel Universal V2OSUEPA for assembly on original Sidel valve

1. Description

Pilot kit for exhaust valve. Replace original part no 00000141768.

One-to-one replacement.

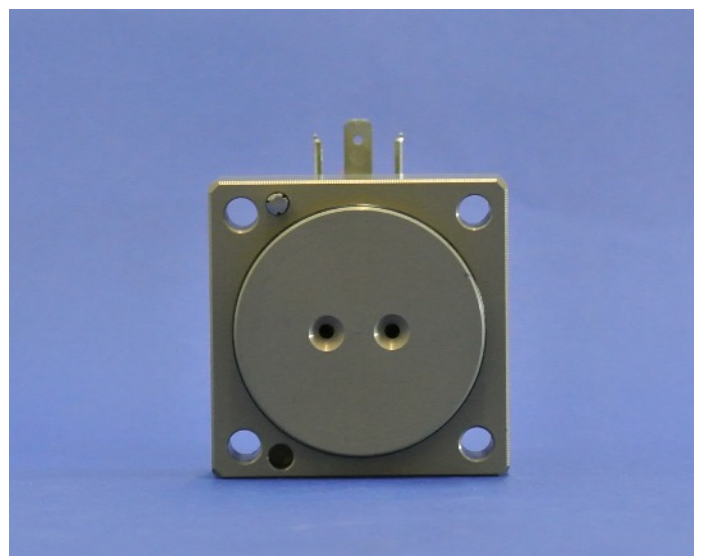
2. Included

- Pilot mounted on base plate

3. Advantages

- + Easy replacement
- + Swiss quality
- + Original Technoplan Engineering spare parts

4. Pictures



5. Technical Data

Reference	V2OSUEPA
Function	Pilot kit for exhaust valve
Operating pressure	4 ... 40 bar
Pilot pressure	6.2 bar \pm 0.2 bar
Materials	Pilot on base plate : Coated aluminium & plastic
Operating temperature	+5° ... +55° C
Pilot valve	24V DC, 9.7W, IP 65
Net-Weight	0.532 kg

6. Dimensions (mm)

